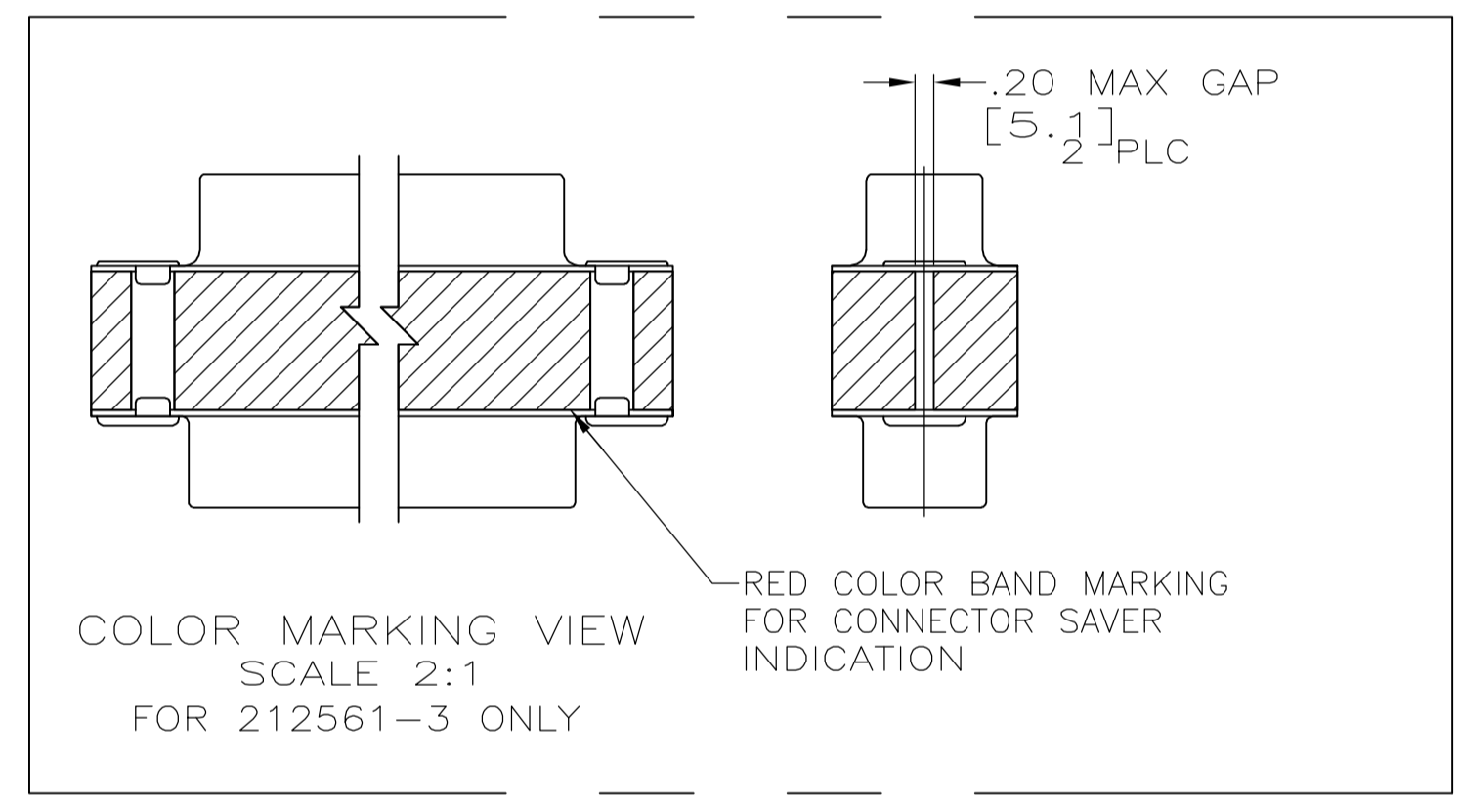
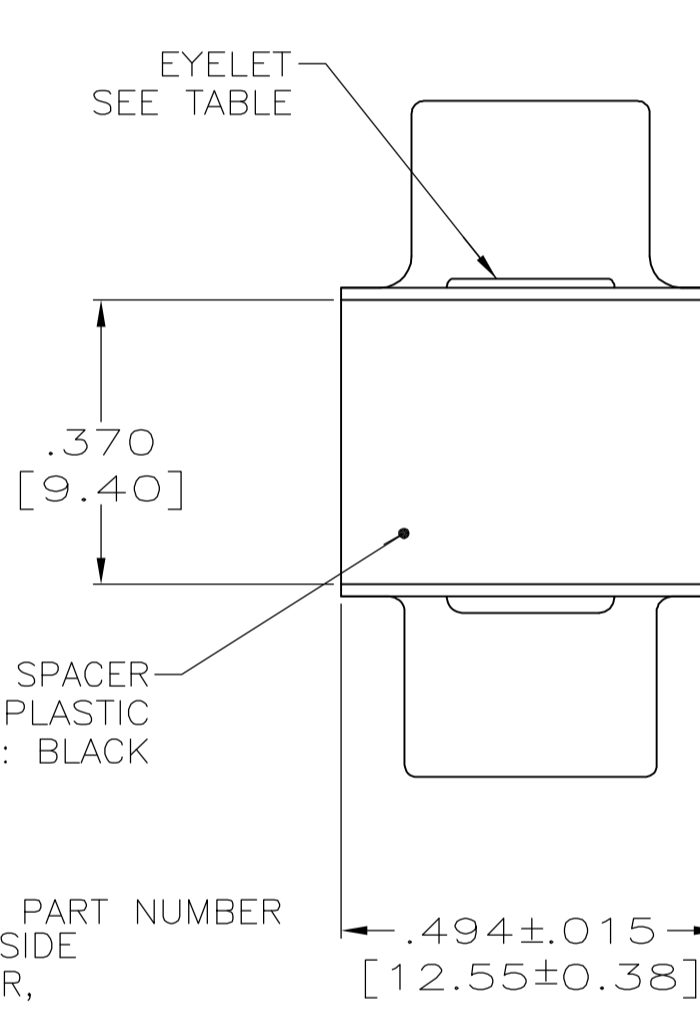
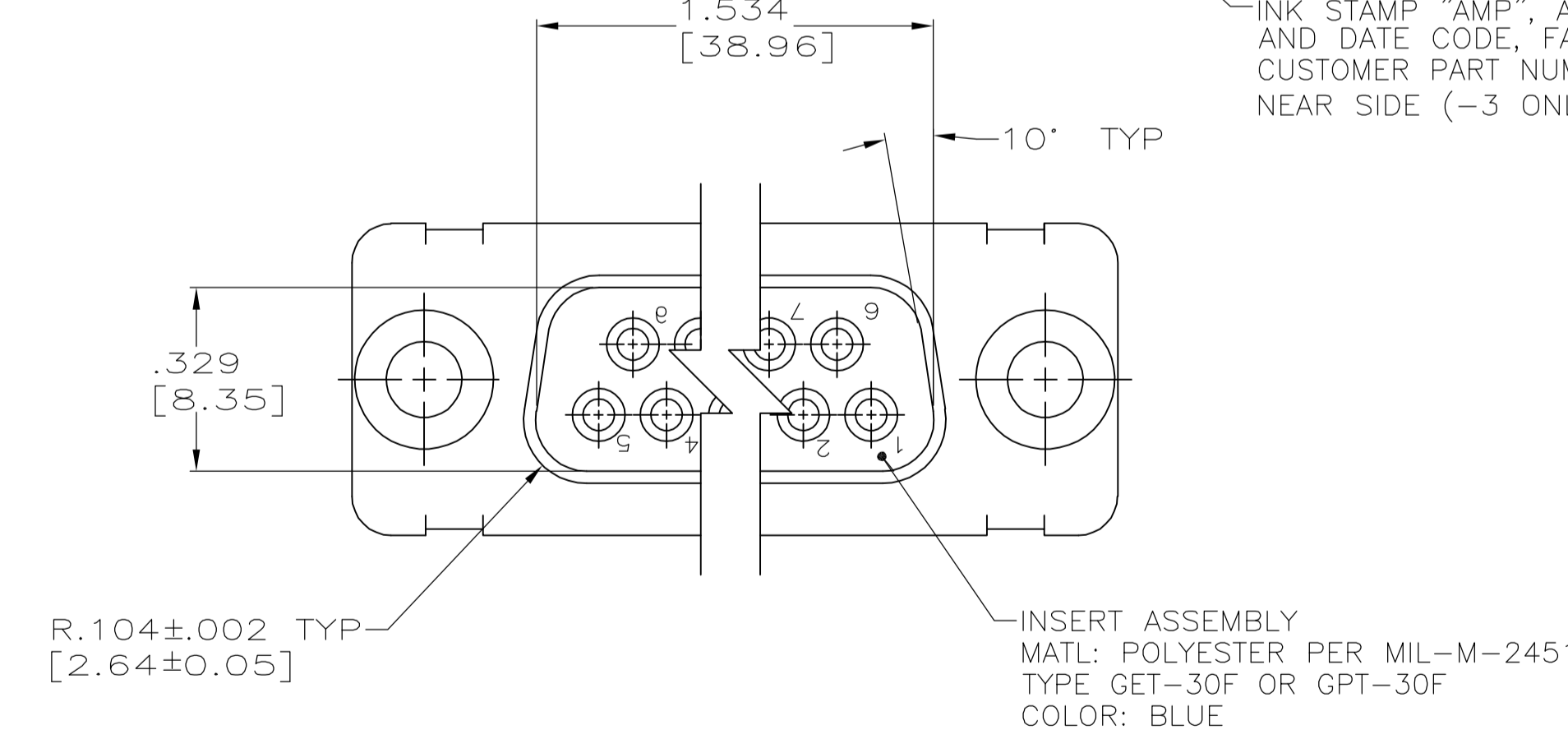
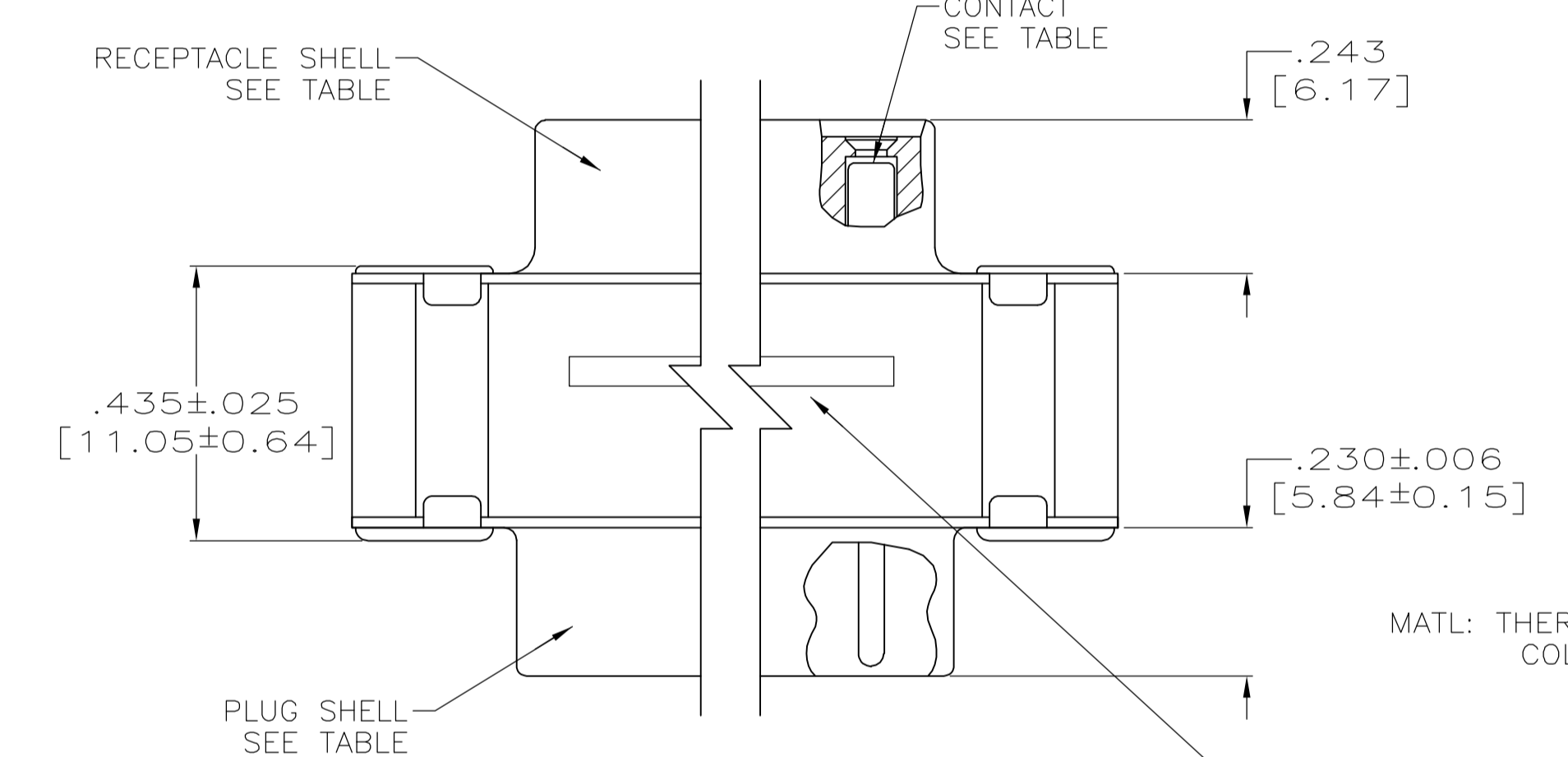
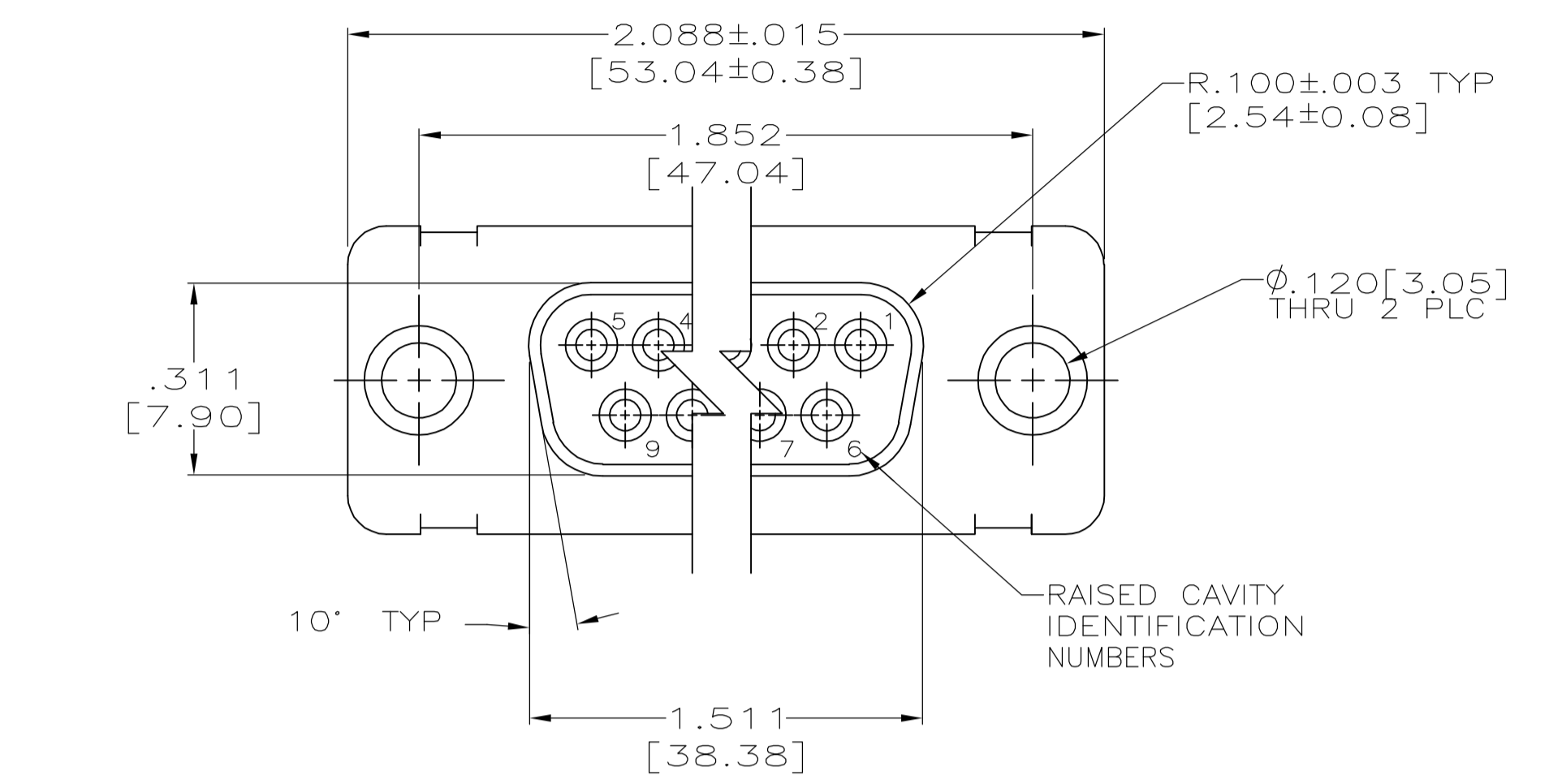


LOC		DIST		REVISIONS			
DF	DO	REV	DATE	BY	APP'D	DATE	BY
M		REV PER ECO 05-014963	06FEB06	BL	CT		



- CONTACTS INCLUDED IN ASSEMBLY.
- MATL: STEEL, PER ASTM-A-109.
- FINISH: CADMIUM PER QQ-P-416.
- CONTACT BODY MATL: BERYLLIUM COPPER PER ASTM-B-197. BODY FINISH: PLATED GOLD, .000050 MIN THK PER MIL-G-45204 OVER NICKEL, .000050 MIN THK PER QQ-N-290. HOOD MATL: STAINLESS STEEL PER ASTM-A-167. HOOD FINISH: PASSIVATED PER ASTM-A-380.
- FINISH: PLATED ZINC .00020 MIN THK PER ASTM-B-633. YELLOW CHROMATE FINISH.
- MATL: BRASS PER ASTM-B-36.
- FINISH: PLATED GOLD, .000050 MIN THK PER MIL-G-45204 OVER COPPER, .000100 MIN THK PER MIL-C-14550.
- CONTACT BODY MATL: BERYLLIUM COPPER PER ASTM-B-197. BODY AND HOOD FINISH: PLATED GOLD, .000050 MIN THK PER MIL-G-45204 OVER COPPER, .000100 MIN THK PER MIL-C-14550. HOOD MATL: BRASS PER ASTM-B-36.
- FINISH: PLATED ZINC PER ASTM-B-633 .000200 MIN THK WITH SUPPLEMENTARY CHROMATE (Cr3+).

				5-212561-1
			4U884 SOCN R10002677-0103	212561-5
OBSOLETE				212561-4
			(1J02-103)	212561-3
				212561-2
				212561-1
EYELET	SHELLS	CONTACT	CUSTOMER P/N	PART NO.

DIMENSIONS:		TOLERANCES UNLESS OTHERWISE SPECIFIED:		APPROVED:		DATE:		NAME:	
INCHES		0 PLC	± -	CHK	T. THOMPSON	11-07-94		Tyco Electronics Corporation	
		1 PLC	± -	APP'D	D. MANTIONE			Harrisburg, PA 17105-3608	
		2 PLC	± -	PRODUCT SPEC		NAME		CONNECTOR SAVER, AMPLIMITE	
		3 PLC	± -	APPLICATION SPEC		SIZE		25 POSITION, SIZE 3, SERIES 109	
		4 PLC	± .005 [0.13]	WEIGHT		DRAWING NO		RESTRICTED TO	
		ANGLES	± -	CUSTOMER DRAWING		A1 00779		C=212561	
MATERIAL		FINISH		SCALE		SHEET		REV	
				4:1		1 OF 1		M	